



TRIO TRAC

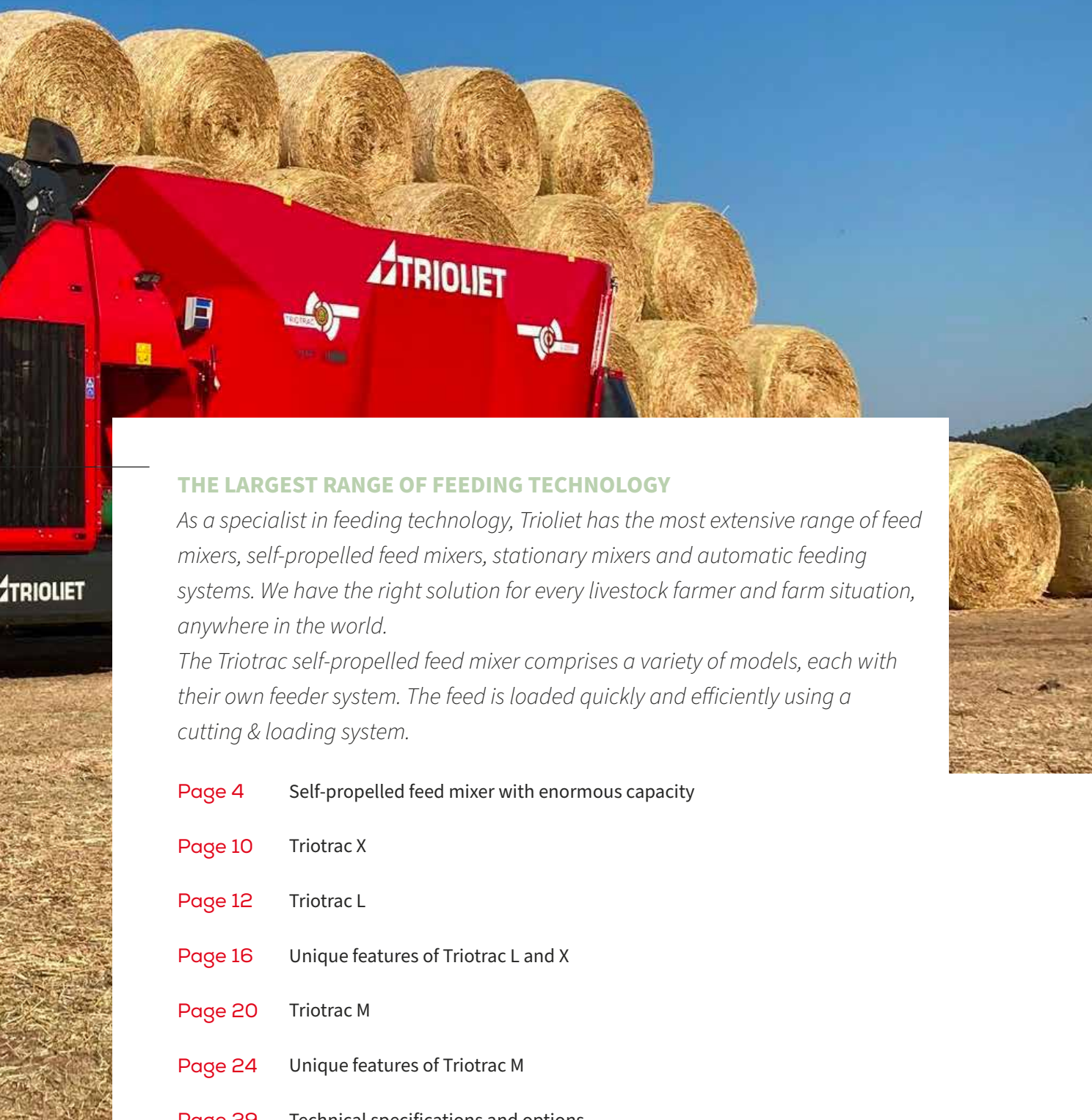
*self-propelled
feed mixers*

Trioliet. Invents for you.



**QUICK AND ACCURATE WHILE
MAINTAINING THE FEED
STRUCTURE THANKS TO A
CUTTING & LOADING SYSTEM**





THE LARGEST RANGE OF FEEDING TECHNOLOGY

As a specialist in feeding technology, Trioliet has the most extensive range of feed mixers, self-propelled feed mixers, stationary mixers and automatic feeding systems. We have the right solution for every livestock farmer and farm situation, anywhere in the world.

The Triotrac self-propelled feed mixer comprises a variety of models, each with their own feeder system. The feed is loaded quickly and efficiently using a cutting & loading system.

Page 4 Self-propelled feed mixer with enormous capacity

Page 10 Triotrac X

Page 12 Triotrac L

Page 16 Unique features of Triotrac L and X

Page 20 Triotrac M

Page 24 Unique features of Triotrac M

Page 29 Technical specifications and options



EXTREMELY HIGH-PRECISION FEEDING

— Loading, mixing and discharging with one single machine. Feeding at multiple locations while maintaining the feed structure. The Triotrac self-propelled feed mixer is designed for quick, accurate feeding with no feed losses. Whether large or small quantities of feed or long or short components, the Triotrac mixes the feed easily into a uniform ration. We offer a complete range of Triotrac selfpropelled feed mixers in various configurations and dimensions.

- ✓ **Triotrac M** 1 auger 500 & 600 cu.ft.
- ✓ **Triotrac L** 2 auger 600, 715 & 860 cu.ft.
- ✓ **Triotrac X** 2 auger 1000 & 1,160 cu.ft.

RELIABLE, ECONOMICAL SELF-PROPELLED FEED MIXER WITH A LARGE CAPACITY

The Triotrac is renowned for its large capacity. It cuts and loads up to 5.512 Lbs of grass silage per minute. The machine guarantees exceptional results day in, day out. Some customers use the Triotrac for up to 10 hours a day. The very first Triotrac continued to work reliably for 9.5 years of service. After having worked for a total of 20,797 hours, it was replaced by a Triotrac New Edition. For the company that owned it, one of the primary reasons to choose the Triotrac again was the speed at which the machine is able to process large quantities of feed. The Triotrac enabled the customer to save 14 hours of work per week and four litres of diesel per hour when compared to a self-propelled feed mixer produced by a competitor. Read the whole story on page 6.



UNIQUE FEATURES:

- ✓ Unique cutting & loading system
- ✓ Suitable for all feed types
- ✓ Maintains the feed structure
- ✓ Ensures quick and conveniently feeding
- ✓ No feed losses at the silage pit or heating up the silage pit

FOUR-IN-ONE-MACHINE

The main advantage of a self-propelled feed mixer is that it is actually a four-in-one-machine. A trailed feed mixer requires a tractor, shovel, telescopic handler or tractor with front end loader along with a silage extraction system. The Triotractor self-propelled feed mixer doesn't need any of this. This machine can do everything and is ready to administer feed at all times.

CONVENIENT FEEDING ACROSS DIFFERENT LOCATIONS

The Triotractor meets requirements for driving on public roads. This makes it possible to administer feed at different locations. The hydrostatic drive mechanism in combination with the powershift enables the Triotractor to travel long distances with ease. The ECOdrive reduces the engine's RPM, enabling it to reach 25 MpH using very little fuel. The machine has full Hydraulic/spring suspension comes with a cruise control setting, a rear-view camera, air conditioning, heated, electrically adjustable mirrors and a radio. This makes the Triotractor exceptionally well-suited for dairy farms that prioritise convenience and wish to administer feed quickly.



Henk Brakke farms in Grand Valley, Ontario, together with his wife and his parents. Together, they milk around 140 cows. They raise their own heifers, do some cash cropping, and grow their own forages, including corn and haylage.

MANY REASONS TO CHOOSE FOR THE TRIOTRAC

We chose the Trioliet self-propelled feed mixer for many reasons, but one of the biggest factors was the cutting quality. The cutting quality and the face quality, in our opinion, are the best. We tested other self-propelled TMR mixers, and found out that the Triotrac consistently delivered

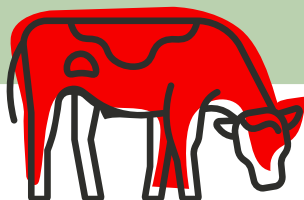
a better silage face, better cutting, left the fiber more intact, and used a lot less fuel and power.

Unique Features of the Trioliet self-propelled feed mixer
One major benefit of the Trioliet self-propelled feed mixer is the telescopic cutting arm. It allows us to cut straight from the top of the silage bunk and then curve down, creating a clean, straight face instead of leaving an arch at the top. Another great feature is the adjustable cabin height, which improves visibility. Especially on the right-hand side, when working close to a wall, the ability to raise the cabin along with the mirror provides a much better view of what you're doing.



“WE CHOSE THE TRIOTRAC BECAUSE OF THE CUTTING AND FACE QUALITY”

Henk Brakke | dairy farmer



“You can buy the best machine in the world, but if there’s no good service and parts to back it up, it doesn’t work for us”

Service is a critical factor for us. You can buy the best machine in the world, but if there’s no good service and parts to back it up, it doesn’t work for us. The machine needs to run 365 days a year, seven days a week. Stratford Farm Equipment has been excellent in setting up the machine and providing service. The Trioliet has been incredibly reliable, and for the rare minor issues we’ve

experienced, the response has been immediate. The sales staff and service technicians are extremely knowledgeable. Additionally, the support and information we’ve received from Trioliet in the Netherlands have been invaluable.



For more stories, see our Blog
www.trioliet.com/en/blog_stories



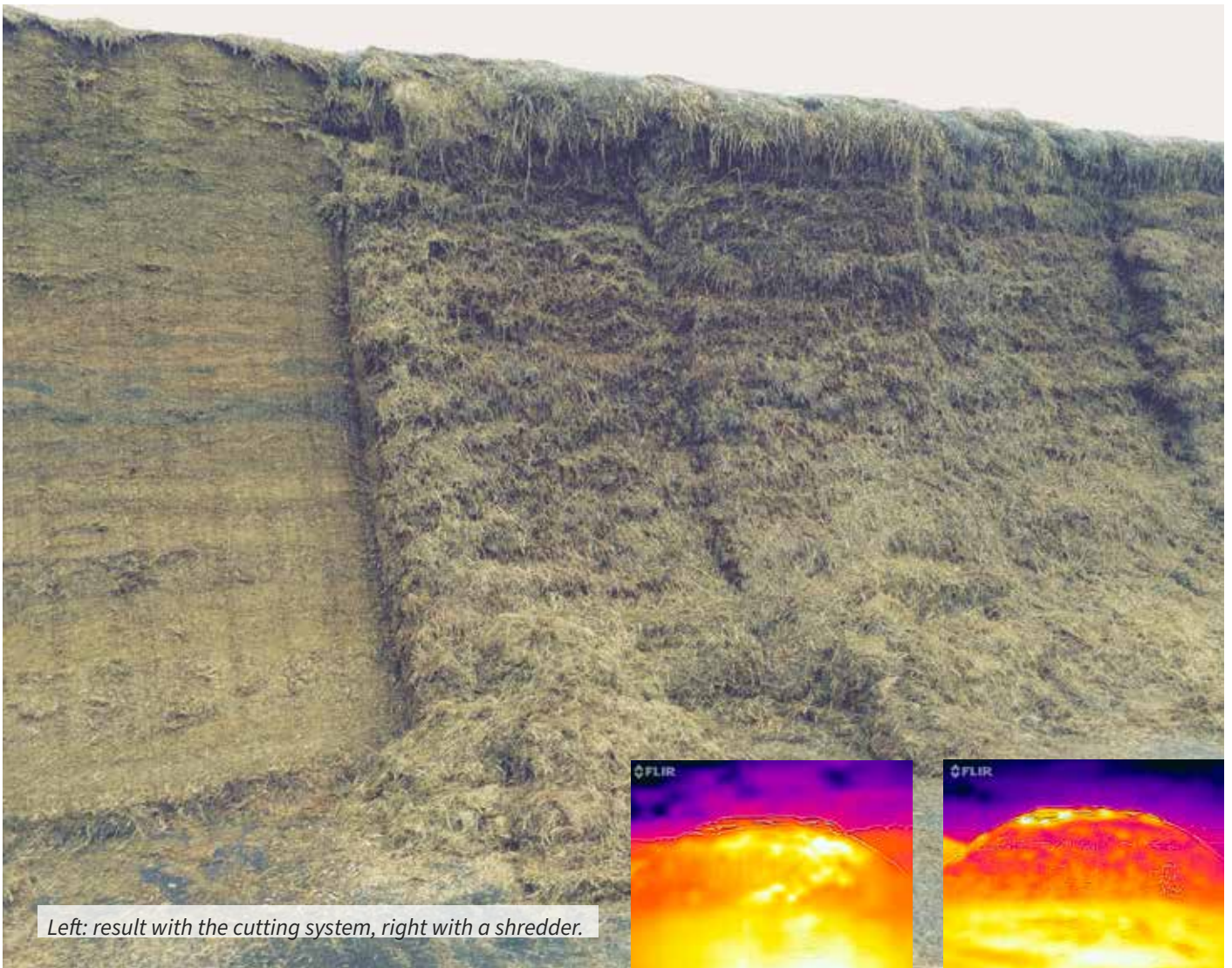
RESTRICT HEATING IN THE SILAGE PIT

While a lot of time and attention is devoted to making good silage, less focus is placed on ensuring quality when the silage is extracted. This costs farmers a great deal of money despite being simple to avoid – that is, providing the right silage extraction technology is used. The unique cutting system on the Triotractor self-propelled feed mixer minimises the degree to which the silage pit heats up. A range of causes is behind thousands of kilos of feed being lost each year due to incorrect silage storage and extraction techniques. Heat generation is an important cause of this. It can ruin between five and ten percent of the feed's nutritional value and result in a lower dry matter uptake. A silage pit with five percent heating leads to losses of 650 VEM per cow per day. This shortfall usually has to be met with concentrate feed, a

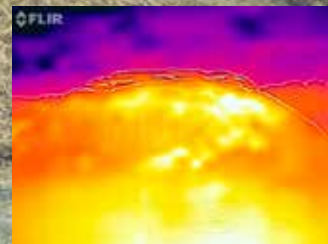
considerable expense that can increase to up to \$ 67 per day for a farm with 100 cows. This equates to \$ 6,000 every three months. Practical research conducted by Hendrik Donk into the silage quality at 40 dairy farms showed that as much as 46% of corn silage and 58% of grass silage showed signs of initial to serious heat loss. While companies are investing heavily in heat inhibitors, little to no research is being done into how silage is extracted. Nevertheless, it would be wise to take a critical look at this area.

DENSE SILAGE WALL THANKS TO THE TRIOLIET CUTTING SYSTEM

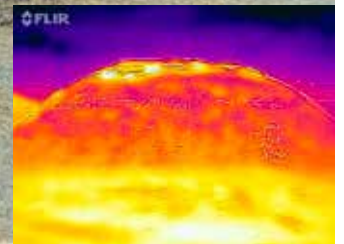
We developed our feed technology based on the knowledge that good silage extraction is just as important as effective silage making. We are the only producer that provides an



Left: result with the cutting system, right with a shredder.



^ Heated silage



^ Cooler silage

active cutting system in our self-loading, self-propelled feed mixer. The cutting system on the Triotrac cuts through the silage with ease while leaving the structure intact. The feed is not mashed, run over or shredded; it is cut with care and precision, ensuring no key nutrients are lost while keeping

the structure intact. After cutting, the cutting system leaves behind a smooth, very dense silage face. This prevents oxygen from entering the silage and reduces secondary fermentation. In other words, the blade cuts both ways...





HEAVY DUTY SELF-PROPELLED DIET FEEDER

ENORMOUS LOADING CAPACITY AND CUTTING HEIGHT UP TO 8 METRES

The Triotrac X-Range is particularly suitable for large dairy and beef farms who want to feed their cattle extremely accurate and efficient. The Triotrac X-Range is available with a capacity of 1,000 and 1,160 cu.ft.

The Triotrac X2 3200 is equipped as standard with a telescopic cutter loading system with a cutting height of up to 27 ft high, a heavy duty mixing tub with Trionox lining, auger drive with heavy-duty planetary gearboxes, three heavy duty axles with 6x 445/65 R22.5 tyres and an extra wide transverse discharge belt. Its smaller brother, the Triotrac X2 2800L has

a cutting height of up to 20 ft as standard and is equipped with 2 axles. And that's not all!

LOW FUEL CONSUMPTION AND OPTIMUM VISIBILITY

The 6-cylinder, 270 HP FPT common rail diesel engine and the I-control ensure fuel efficiency. The engine is also mounted on a special rail, which makes maintenance easier. The comfortable and spacious cabin features a hydraulic vertical adjustment system and guarantees you the best possible view.



TRIOTRAC X-RANGE BENEFITS:

- ✓ The cutting-loading system with cutting height up to 27 ft
- ✓ Largest loading capacity among self-propelled diet-feeders
- ✓ Extra wide 39" discharge belt conveyor ensures high discharge capacity
- ✓ Heavy duty mixing tub with 1/6" Trionox lining
- ✓ X-Range auger drive with heavy planetary drives
- ✓ Two (2800L) or three (3200) heavy axles with 6x 445/65R22.5 tires
- ✓ Reduced ground pressure and higher loading capacity thanks to lift axle
- ✓ All-wheel steering and four wheel drive as standard

Scan the QR code with the camera of the smartphone, open the page and watch the video of the Triotrac X





SILAGE EXTRACTION OF UP TO 20 FT IN HEIGHT

The Triotrac can extract silage from pits of up to 20 ft in height using its telescopic loading arm. The system is capable of loading all types of feed with ease (including round or square bales), and the feed structure remains intact thanks to the unique Trioliet cutting system. The view of the pit face and the loading process is optimal at all times as the cabin's height can be adjusted and aligned exactly with the loading arm's position. The loading arm is fitted with a curve correction system to ensure a straight vertical cutting surface. This eliminates the risk of overhanging feed, which can break off and lead to feed losses and hazardous situations.

MIXING BASED ON THE DUAL FLOW PRINCIPLE

The mixing tub has an asymmetrical design to force the feed in the direction of one of the augers. The feed is therefore distributed across the entire mixing tub. This, in combination with the Twin Stream augers (which ensure the feed is pushed upward), creates a uniform mixture. We call this feed distribution process 'Dual Flow'. For self-propelled feed mixers where the feed is not always loaded in the centre of the mixing tub, in particular, the Dual Flow principle is particularly essential for ensuring a perfect mixing result.

Scan the QR code with your smartphone's camera, open the page and see how the Dual Flow principle works



Dual Flow

FUEL-SAVING AND GOOD FOR THE ENVIRONMENT

In addition to the technical benefits provided for the feed, the cutting system offers another key advantage: a minimal power requirement enables the machine to work at a reduced RPM while the feed is being loaded, which also minimises diesel consumption.

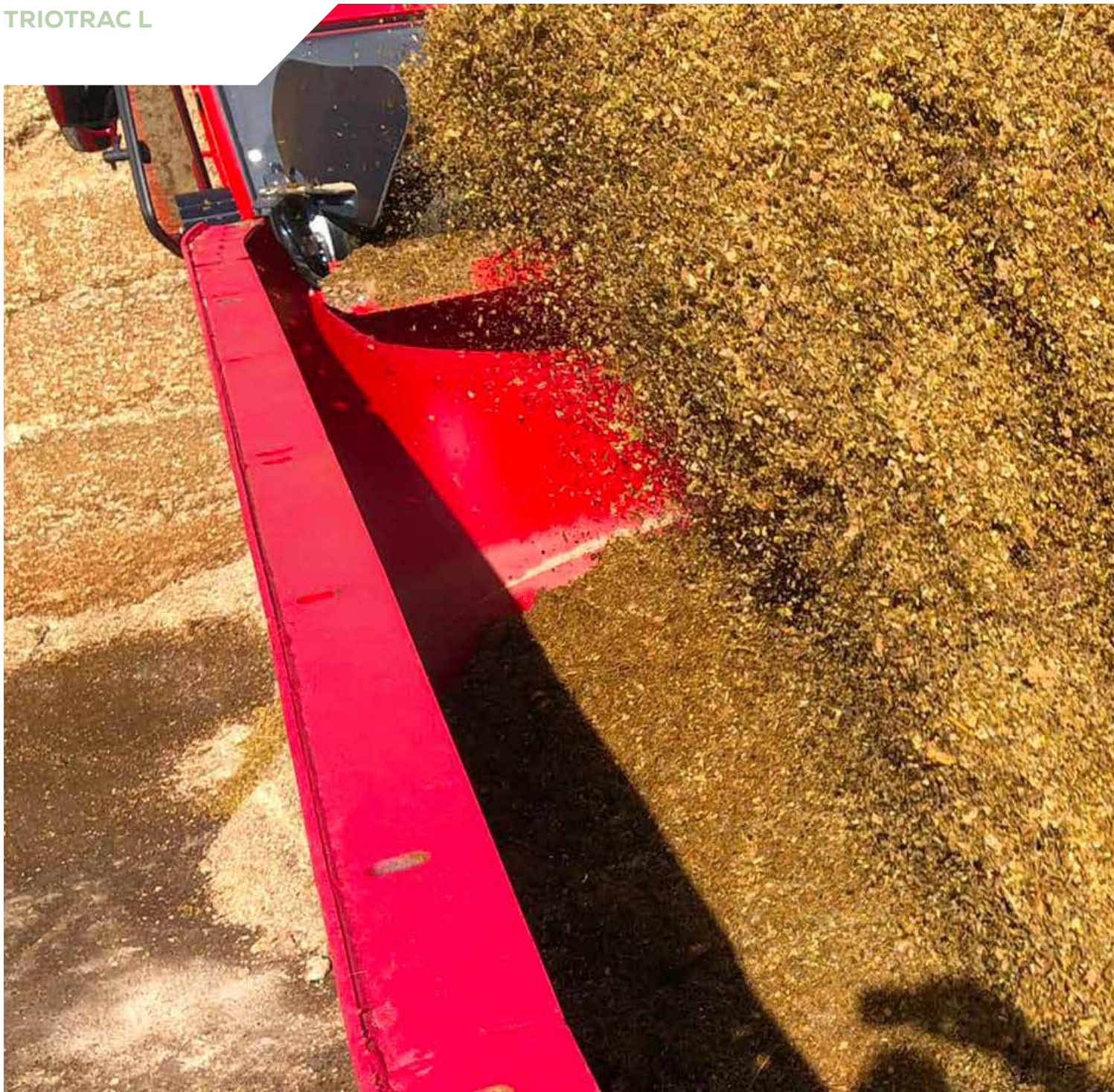
The Triotrac is equipped with an ECOdrive. The ECOdrive ensures that the vehicle's engine performance is the best it can be. This technology adapts the speed, acceleration and RPM for each gear, which ensures that more power is provided only when necessary (e.g. while on the road).

The AUTOMIX function automatically ensures an optimal auger speed so that a perfect mixture is always achieved in as short a time as possible and with as little diesel as possible. Initially, the augers turn quickly for smooth processing of long material. Then they rotate weight-dependently to the optimum mixing speed. When dispensing, the speed is automatically to the emptying speed of 58RPM.

*"This makes creating an optimal mixture a breeze.
Also for less experienced drivers."*

Scan the QR code with your smartphone's camera, open the page and watch the Triotrac video





**PROCESSES LARGE
AMOUNTS OF FEED IN A
SHORT AMOUNT OF TIME**



TRIOTRAC L

The Triotrac L, the bigger brother of the M model, has been around for a while. This is a self-propelled feed mixer with two vertical augers and an elevating conveyor on the front. This self-propelled feed mixer can process large quantities of feed quickly and accurately. The Triotrac L is available with a capacity of 600, 715, 860 cu.ft.

UNIQUE FEATURES OF TRIOTRAC LAND X

Long-life augers | 7/8" / 1"

Easily accessible diesel engine | thanks to extending hydraulic subframe

Discharge units | Various discharge options are possible

Controls | Four-wheel drive and four- or six-wheel steering

Reliable drive | with a powershift transmission for the ECOdrive



• **Telescopic cutting/loading system** | with silage cutting height of up to 20 ft or 27 ft

• **Feed structure maintenance** | Cutting system to maintain feed structure and dense silage pit face

• **Adjustable cabin** | Spacious, height-adjustable cabin for optimal view and low height clearance

• **Elevating loading** | 73" wide for large loading capacity



• **Operation** | Simple operation with programmable settings for loading and discharge

• **Suspension** | All-round suspension for comfortable road and yard transport

MAGNET IN MIXER WAGON PREVENTS HEALTH PROBLEMS

Each year, an estimated 12,000 cows in the Netherlands alone are injured by ingesting litter that has entered their feed. Another four thousand cows die as a result of hardware disease. Wageningen University conducted research into the effects of ingestion of stray metal pieces and concluded that it costs dairy farmers millions of euros per year in medical treatments, mortality and lower milk production. However, there is a relatively simple and inexpensive solution; magnets in the feed mixer wagon.

Trioliet offers two types of magnet:

1. Auger magnets on the auger blade
2. Magnet strip on the discharge chute of side discharge door



Scan the QR code with your smartphone's camera, open the page and see which magnets are available

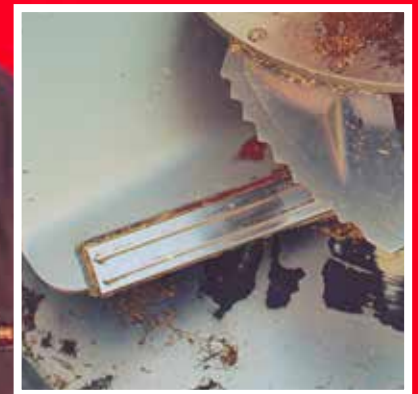




Pim Lenferink | Dairy farmer



135 Dairy cows



PREVENT HARDWARE DISEASE

MAGNET ON THE AUGER

Pim Lenferink from Vriezenveen (the Netherlands) knows that magnets can prevent a lot of injury. He feeds his 135 dairy cows with a Trioliet feed mixer that is fitted with auger magnets. He was not aware of this product until his dealer explained he could place magnets on the augers. It was a purchase he definitely does not regret. He shows his ‘harvest’ on the kitchen table, picking out the most striking objects. This includes nails, barbed wire and screws. But other, sometimes unidentified, metal objects are also included in the collection. Some have extremely sharp edges and are as long as a ballpoint pen. You can imagine how these objects could cause a lot of injury to a cow. “Within a month we collected around thirty objects”, explains Pim Lenferink. “Every day we find sharp metal objects on the magnet. We

were so impressed that we immediately installed a magnet on the second auger.”

BIRDS COULD BE THE CULPRITS

How these metal objects enter the feed is shrouded in mystery. Pim: “They could be thrown by passing motorists. But we have also heard that crows pick up these types of objects to build their nests and then drop them because they’re too heavy. Whatever it is, this collection is certainly food for thought. I didn’t know beforehand what the results would be.”



COMPACT, SELF-PROPELLED FEED MIXER

TRIOTRAC M: COMPACT AND AGILE

The Triotrac M is a compact self-propelled feed mixer with a single vertical auger. The feed is loaded into the loading rotor using a cutting/loading system, where it is simultaneously transported to the mixing tub. The compact self-propelled feed mixer is extremely agile, making it suitable for low buildings in cramped yards. A small turning circle paired with four-wheel steering makes the Triotrac M especially easy to manoeuvre between buildings and within silage pits. The Triotrac M is available with a capacity of 500 & 600 cu.ft.

FOR CLEAN LOADING WITH NO SPILLAGE

The Triotrac M can extract silage at heights of up to 15 ft. The unique loading system with rotor and loading platform

ensures that the feed is processed cleanly and without losing any during the loading process. Any loose feed in front of the silage pit is simple to scoop up. This is beneficial both inside the silage pit and in front of it, especially in combination with the unique cutting system (which leaves a neat cutting surface). The Triotrac M can also process round or square bales, loose by-products, mineral feed and even fodder beet or potatoes with ease.

ALWAYS THE RIGHT AMOUNT OF FEED

The loading arm pushes the feed into the loading rotor via the loading platform, where the built-in weighing system calculates the quantity of feed in the loading rotor. It therefore knows immediately how much has been loaded.

The rotor transports the feed to the mixing tub, where the mixing auger mixes the feed in the same direction. All feed types are processed quickly and carefully to maintain the structure. Once the feed is in the mixing tub, it is cut to a smaller size (as required) by the Trioform auger knives and mixed into a uniform ration.

QUICK, EVEN FEED DISCHARGE

The Triotrac M can be fitted with a cross conveyor belt at the rear (AL) or discharge doors on both sides (ZK). A cross conveyor chain and an extension chain are also available to order for the AL machine. The discharge doors have rounded corners and are extra wide so that the feed flows through them smoothly and is distributed evenly. The rounded discharge opening ensures the discharge doors close perfectly.

COMFORT

The spacious cabin's height can be adjusted to ensure it is always optimal. The joystick in the armrest is used to control the machine. All settings for loading, mixing and discharging the feed can be adjusted with the joystick. For the Triotrac M, the diesel engine is located at the rear of the machine, ensuring it is easily accessible (e.g. for maintenance). Another benefit is that the sound of the engine can barely be heard from the cabin.



Scan the QR code with your smartphone's camera, open the page and watch the Triotrac M video



UNIQUE FEATURES OF TRIOTRAC M

WATCH THE VIDEO:

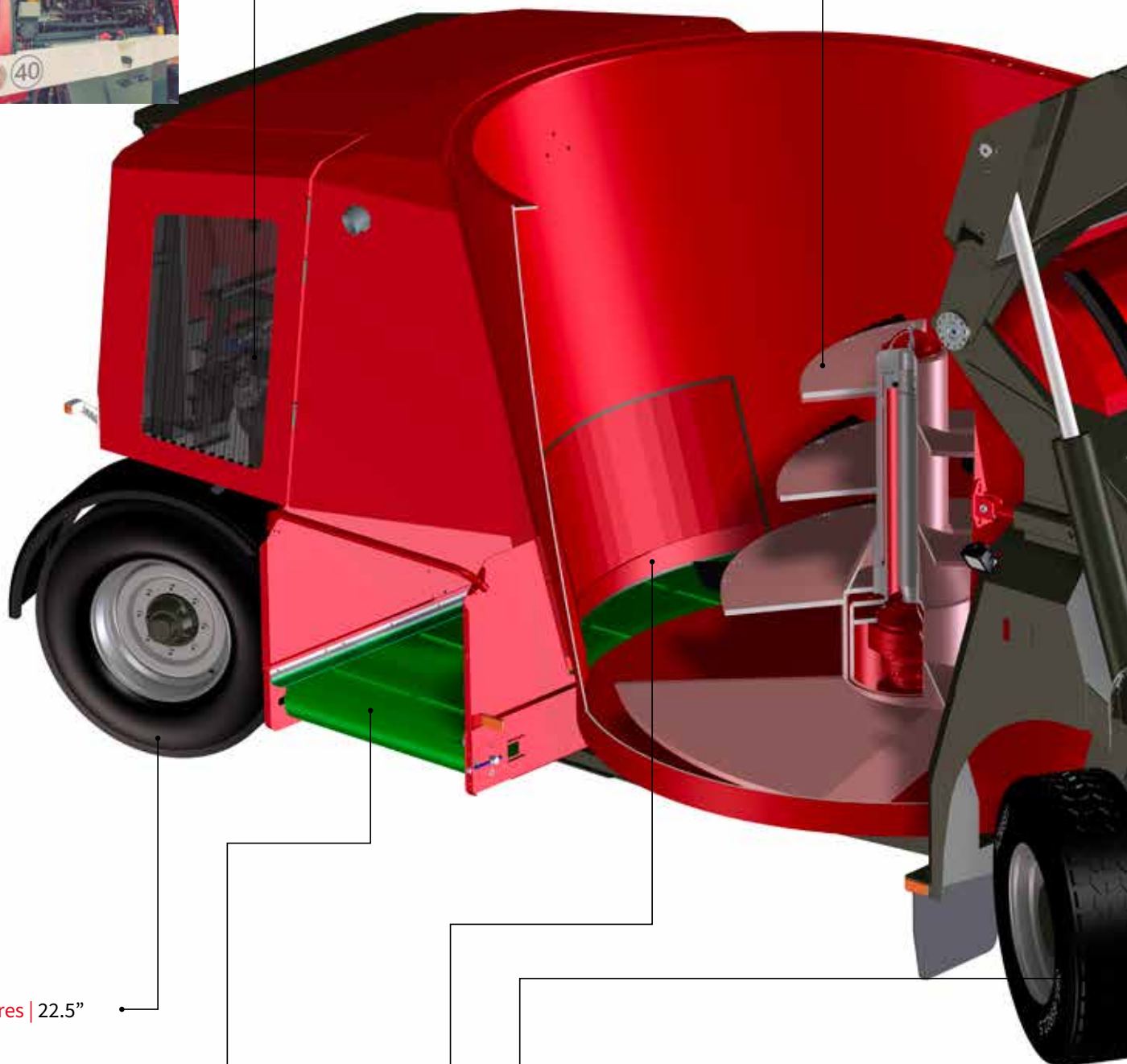
"HOW CAN I OPTIMISE MY FEED MIXER?"

AT TRIOLIET.COM



Long-life auger | 7/8" / 1"

Easily accessible diesel engine



Large tyres | 22.5"

Discharge units | Various discharge options are possible

Controls | Four-wheel steering (optional) with a turning circle of 34 ft

Wide discharge door | for quick, even discharge



• **Cutting & loading system** | cutting height of 177" and cutting width of 73"

• **Feed structure maintenance** | Cutting system to maintain feed structure and dense silage pit face

• **Entry door** | Large, lockable entry door

• **Comfortable cabin** | Spacious, height-adjustable cabin for optimal view and low height clearance

• **Loading platform** | for clean loading free of spillages

• **Loading rotor** | Easy-to-maintain rotor, including weighing system

• **Hydraulic suspension** | Standard hydraulic suspension





EASE OF OPERATION

Ease of use is one of the key characteristics of the Triotrac self-propelled feed mixer series. This was taken into account in every aspect of its design. The machine is operated using an ergonomic joystick. The settings for loading, mixing and discharging the feed are easy to adjust as required. The machine can switch from loading to discharging at the touch of a button. The RPM, the speed of the elevating conveyor and the speed of the augers all adjust themselves automatically.

WEIGHING SYSTEM

Triotrac self-propelled feed mixers are fitted with a programmable weighing computer with a touchscreen, the Triotronic 7600T as standard. The touchscreen can be used to browse easily through the feed data and to switch quickly between components, rations, and animal groups. The large colour display provides a perfect display of weight and ration information. The ration is easy to change from the cabin and can then be processed via the optional feed management system. This enables you to accurately assess the actual feed costs and make adjustments in good time.



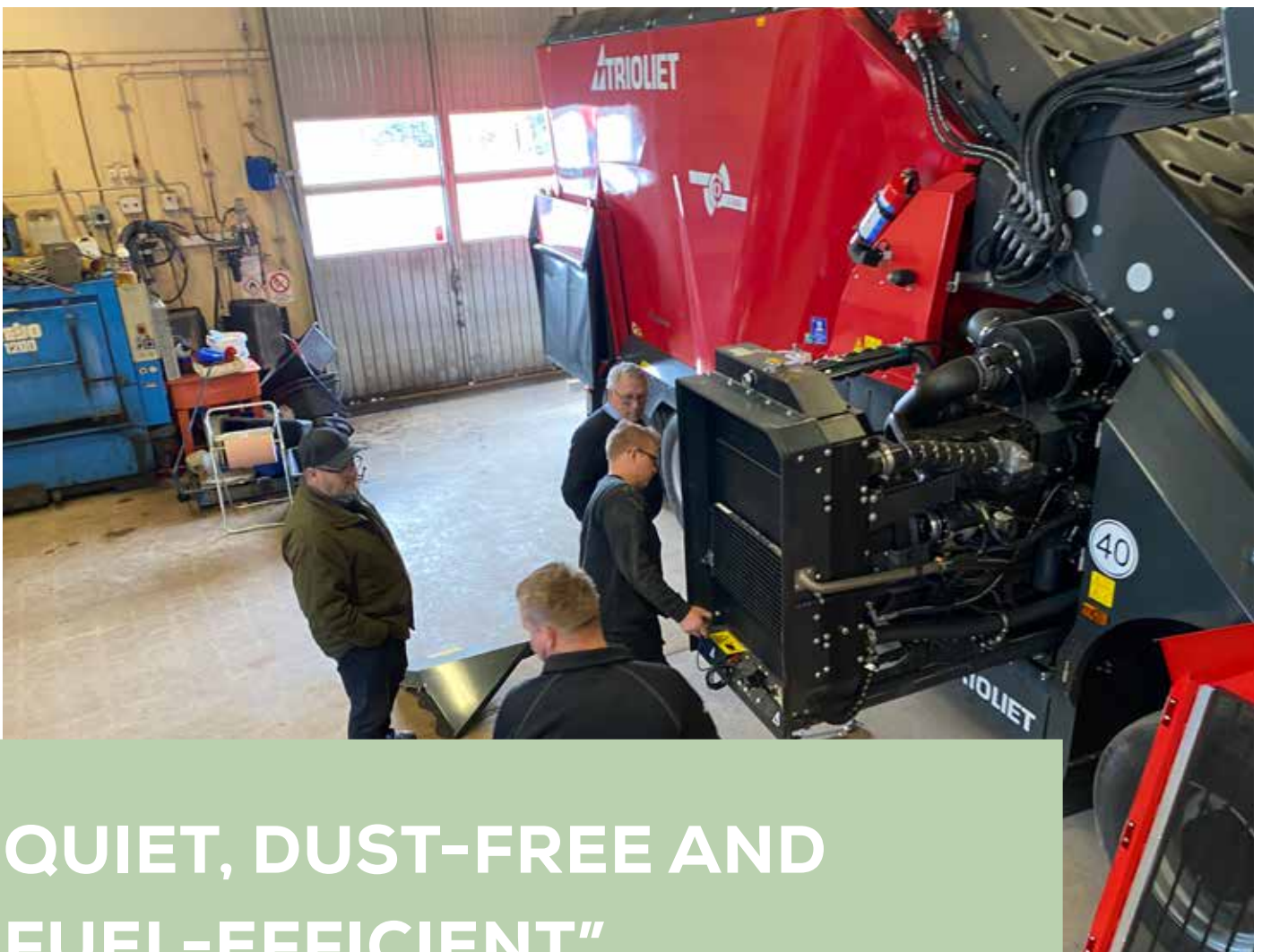
Experience the Triotrac from the cab, you decide what you look at. Scan the QR code with the camera of your smartphone and experience feeding with the Triotrac itself.

MAINTENANCE

All agricultural machinery requires regular maintenance, a factor that was taken into consideration when we were developing the Triostrac. The diesel engine is easy to access in all Triostrac models. The engine in the Triostrac M is rear-mounted. For the larger models in the Triostrac series, the engine is behind the elevating conveyor and can slide out from its housing using a hydraulic sliding subframe. This means the engine is easily accessible at all times. Replacing the filters and changing the oil is simple, too, as all of these components are easy to reach. Of course, there's usually less need to do either of these things because the Triostrac requires just 25 gallon of hydraulic oil to function, and this only has to be replaced after 2,000 hours of service. In addition, an automatic central lubrication system can be installed as an option. We couldn't make it any better...

REMOTE SERVICE

The Rimote system installed in each Triostrac as standard makes it simple to provide service remotely. Failure reports can be shared with service engineers as required. Engineers can then check in the system to see whether the cause can be rectified and if they can directly intervene to resolve the error. Service engineers can also remotely change the system settings and perform software updates, which saves a huge amount of time and money.



**QUIET, DUST-FREE AND
FUEL-EFFICIENT"**



DO YOU KNOW WHAT YOUR ANIMALS ARE GETTING?

TFM FEED MANAGEMENT

The TFM feed management program provides a wealth of valuable information. An updated version of the package was also made available in the cloud recently, meaning you can access it 'at any time'. Not only the rations, the dry matter uptake and the loading accuracy, but also the amount of residual feed and the stocks of raw and concentrate feed can be recorded on the basis of fed rations. In clear graphic reports, you can immediately see what the feed costs are and what the average is over a certain period. In addition, it is also possible to link certain feed management programs to other business management systems. In this case, for

example, the feed data is linked to the milk production and the feed efficiency can be determined easily. In short, it answers one of the most important questions: "What is my return?"

Trioliet offers different TFM versions:

- ✓ **TFM Dairy** feed management for dairy farmers
- ✓ **TFM Beef** feed management for beef farmers
- ✓ **TFM Contractor** can be expanded to Beef or Contractor using modules



SMART SOLUTIONS

Our feeding systems are developed and assembled in our factory in Oldenzaal, The Netherlands. Quality and innovation are our top priorities, There is a reason why we are famous for our robust machines offering an extended service life.

You are guaranteed a quality product when you choose Trioliet. We excel in technical ingenuity. We have more than sixty patents to our name for a reason. Our R&D department not only consists of highly qualified engineers with an understanding of mechanical engineering. They also have a lot of affinity with the agricultural sector. That means we are always developing from the perspective of the user. New machines are thoroughly tested before they go into production. Every day, around 350 employees work on the development, assembly and sale of our feed systems, both at our headquarters in the Netherlands and in the field, at home and abroad. About 85% of our machines are exported to more than 50 countries. You can find Trioliet feed machines in places such as: Germany, the UK, Mexico, Uruguay, Chile, Saudi Arabia, France, Ireland, China, Norway, Canada and Australia.



GREEN LABEL

Our aim in everything we design and produce is to be of service to the farmer. Light work, time and fuel savings, a healthy herd and optimum mixing quality are just some of the priorities that we focus on. Naturally, we also pay careful attention to the environment and to living conditions. The products that make a significant contribution to sustainability are awarded the Green Label quality mark. Take, for example, the fuel-saving Shifttronic gearbox, the Trioliet cutting unit, or the dust-reducing water injection system on our straw blowers. You can recognise the Green Label quality mark by the sticker on the feed mixer.

Scan the QR code with your smartphone's camera, open the page and watch the interactive video



TRIOTRAC X



TECHNICAL SPECIFICATIONS TRIOTRAC X

| Triotrac X | 2800L | 3200 |
|-----------------------------|------------------|------------------|
| Capacity cu-ft. | 1,000 | 1,160 |
| Length | 439" | 447" |
| Width | 109" | 110" |
| Height | 132" | 142" |
| Cutting height max. | 236" | 315" |
| Cutting width | 73" | 73" |
| Cutting depth | 16" | 16" |
| Speed in farm yard mode mph | 0-12 | 0-12 |
| Speed in transport mode mph | 0-25 | 0-25 |
| Tire size (4x) | 445/65 R 22.5 | 445/65 R 22.5 |

TRIOTRAC L



TECHNICAL SPECIFICATIONS TRIOTRAC L

| Triotrac L | 1700 | 2000 | 2400 |
|-----------------------------|------------------|------------------|------------------|
| Capacity cu-ft. | 600 | 715 | 860 |
| Length | 382" | 402" | 404" |
| Width | 96" | 96" | 96" |
| Height | 116" | 116" | 130" |
| Cutting height max. | 236" | 236" | 236" |
| Cutting width | 73" | 73" | 73" |
| Cutting depth | 16" | 16" | 16" |
| Speed in farm yard mode mph | 0-12 | 0-12 | 12 |
| Speed in transport mode mph | 0-25 | 0-25 | 25 |
| Tire size (4x) | 435/50 R 22.5 | 435/50 R 22.5 | 435/50 R 22.5 |

TRIOTRAC M



TECHNICAL SPECIFICATIONS TRIOTRAC M

| Triotrac M | 1400 AL | 1400 ZK | 1700 AL | 1700 ZK |
|-----------------------------|------------------|------------------|------------------|------------------|
| Capacity cu·ft· | 500 | 500 | 600 | 600 |
| Length | 317" | 294" | 317" | 294" |
| Width | 100" | 111" | 100" | 111" |
| Height | 110" | 110" | 126" | 126" |
| Cutting heigth max. | 177" | 177" | 177" | 177" |
| Cutting width | 73" | 73" | 73" | 73" |
| Cutting depth | 16" | 16" | 16" | 16" |
| Speed in farm yard mode mph | 0-12 | 0-12 | 0-12 | 0-12 |
| Speed in transport mode mph | 0-25 | 0-25 | 0-25 | 0-25 |
| Tyre size, front | 385/65 R 22.5 | 385/65 R 22.5 | 385/65 R 22.5 | 385/65 R 22.5 |
| Tyre size, rear | 315/80 R 22.5 | 315/80 R 22.5 | 315/80 R 22.5 | 315/80 R 22.5 |



1



3



4



6



7



10

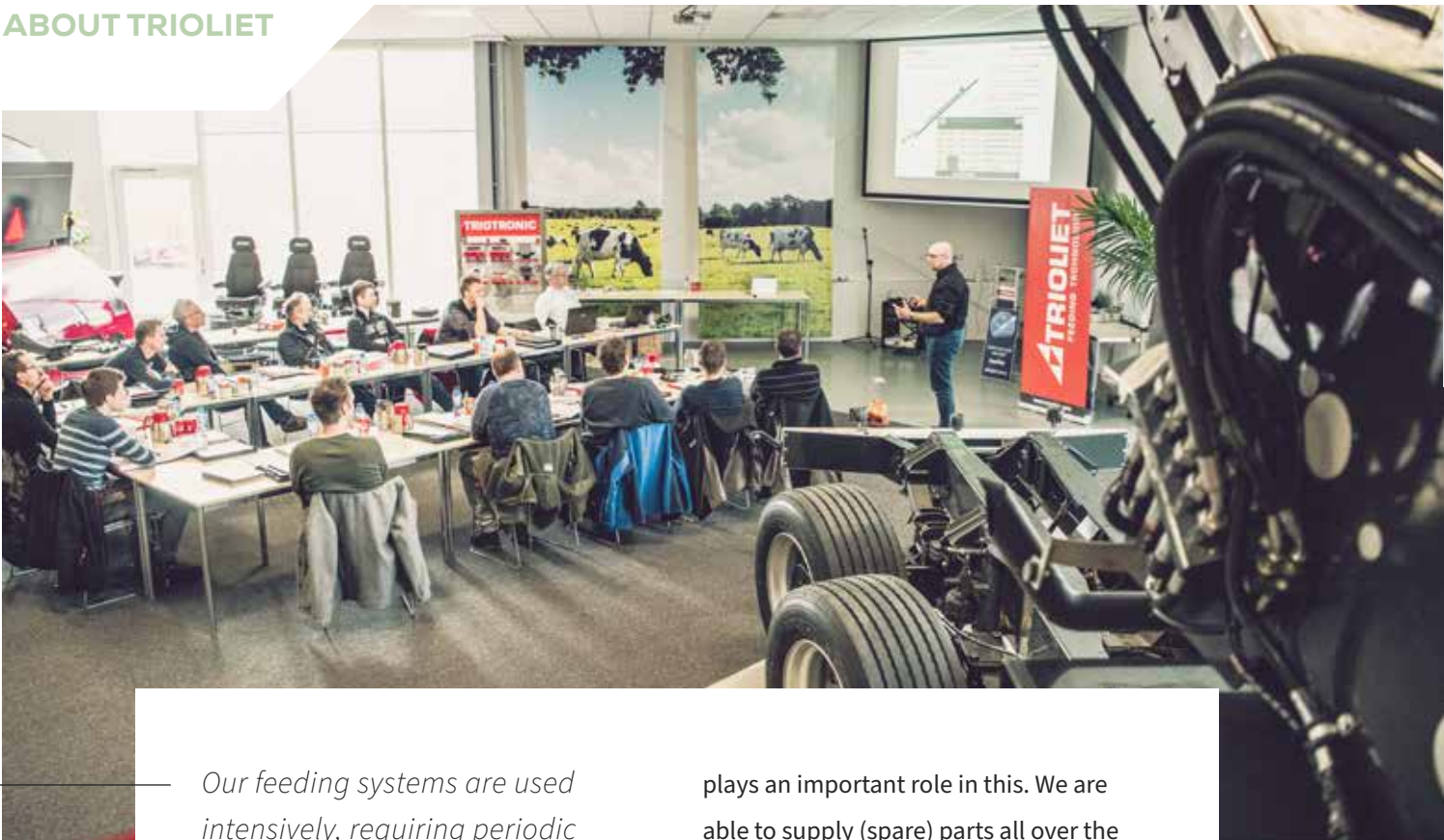
OPTIONS

- | | | | |
|----|---|----|---|
| 1. | Straw blower with water spray unit installation | 5. | Side discharge doors on side at rear (ZK) |
| 2. | C chain | 6. | Cross conveyor belt on rear (AL) |
| 3. | Pre-mix discharge door | 7. | Crab steering (Option on Triotrac M) |
| 4. | Pre-mix discharge door | 8. | Lifting axle |



- 9. Auger magnet
- 10. Climate control
- 11. Camera
- 12. Mineral funnel

ABOUT TRIOLIET



Our feeding systems are used intensively, requiring periodic maintenance. To be able to service your requirements quickly, we have an extensive worldwide dealer network. They are ready to advise and assist as required.

At both our headquarters in Oldenzaal and our branches in France, the USA and China, our service engineers and fitters are on hand to offer support to the dealers. The central parts warehouse

plays an important role in this. We are able to supply (spare) parts all over the world within 24 hours both from the head office in the Netherlands and from our warehouses in the United States and China. Our dealers periodically complete training so they are always up to date with the most recent developments. Fitters and salesman come to our head office from all over the world for technical and commercial training sessions at the Trioliet Training Centre.





As you can see, we are a total supplier of premium feed technology. Every day, hundreds of thousands of cows all over the world are fed with our machines. Our family business has grown into a global player over the course of 75 years. We view it as our duty to provide sustainable premium solutions around the world for the mechanised, automated feeding of cattle on professional farms. That means that designing new solutions and optimising existing technologies are our highest priorities. We are able to offer made-to-measure solutions for cattle farms throughout the world. To do this, we draw on our extensive product range. We hope to be able to be of service to you too.



A handwritten signature in blue ink, which appears to read "Robert Liet". The signature is stylized and written in a cursive-like font.

Robert Liet



TRIOLIET.COM

Trioliet. Invents for you.

TRIOLIET BV

Kleibultweg 59

NL-7575 BW Oldenzaal

The Netherlands

T +31 541 – 57 21 21

info@trioliet.com